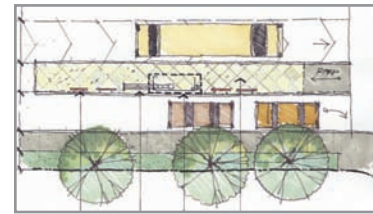


SANDAG SuperLoop

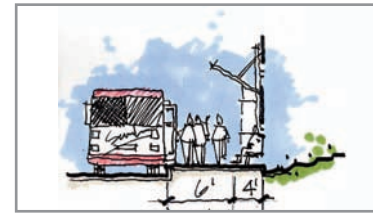
Transportation Planning



Land Use Map: 1/4 and 1/2 mile radius away from transit stop



Station Plan Option



Shelter Design Section

Project Description:

As a sub-consultant to STV, Inc., CityWorks assisted in the design of a rapid shuttle service to major activity centers in the UTC area including: UTC Mall, UCSD, La Jolla Village Shopping Center, Costa Verde Shopping Center and the many business centers in the area. Anticipated to have 11 - 14 stops, CityWorks provided land use analysis for areas within a quarter mile radius of these stops. The purpose of this analysis was to make recommendations about creating sufficient land use intensities, pedestrian-supportive site design, and viable pedestrian routes to support each of the stations. Also, CityWorks designed three prototypical transit stations.

Based on this work, CityWorks created the Urban Design and Pedestrian Access Plan that summa-

rized key findings about the existing pedestrian connectivity to each of the proposed stations from the surrounding activity centers. Additionally, it provided short-term and long-term recommendations for improved connections between land uses and pedestrian routes to the planned SuperLoop stations.

Services:

- ▶ Prepared the Pedestrian Access and Urban Design Plan Report.
- ▶ Assisted in the preparation of the Land Use Assessment Report.
- ▶ Prepared alternative station platform designs.

Client:

Roderick Diaz, Planning Manager
STV Incorporated

Location:

San Diego, CA

Contact:

Laura Warner, Partner
619.238.9091 X109

Catherine Smith, Partner
619.238.9091 X112